



9405 GWL Terrein
Amsterdam

9405 GWL Terrajh
Amsterdam

dok
architecten



9405 GWL Terrain, Amsterdam



9405 GWL Terrain, Amsterdam

GWL TERREIN

locatie:

Amsterdam

programma:

Natuurinclusief wonen

architect:

Liesbeth van der Pol

ontwerpteam:

K. Elffers, M. de Vries

opdrachtgever:

Stichting ECO-plan

start uitvoering:

1994

oplevering:

1996

Zigzag woningen: twee woningen op een stramien door elkaar gevlochten ten behoeve van uitzicht, bezonning en flexibiliteit. De compacte structuur, autovrije paden en rijkheid aan groen maken van het GWL terrein een biodiverse oase in de stad.

Zigzag houses: two houses on one plot that are interwoven, generating better views, insolation and flexibility. Its compact structure, car-free paths and abundance of green outline the GWL Terrain as a biodiverse oasis in the city.

location:

Amsterdam

programme:

Residential

architect:

Liesbeth van der Pol

design team:

K. Elffers, M. de Vries

client:

Stichting ECO-plan

start of construction:

1994

completion:

1996



In Nederland | In the Netherlands



In Amsterdam

9405 GWL Terrein, Amsterdam

9405 GWL Terrain, Amsterdam



Situatie | Situation

9405 GWL Terrain, Amsterdam

9405 GWL Terrain, Amsterdam

dok
architecten



1996



2021

9405 GWL Terrein, Amsterdam

9405 GWL Terrain, Amsterdam

dok
architecten



9405 GWL Terrain, Amsterdam

9405 GWL Terrain, Amsterdam



9405 GWL Terrein, Amsterdam

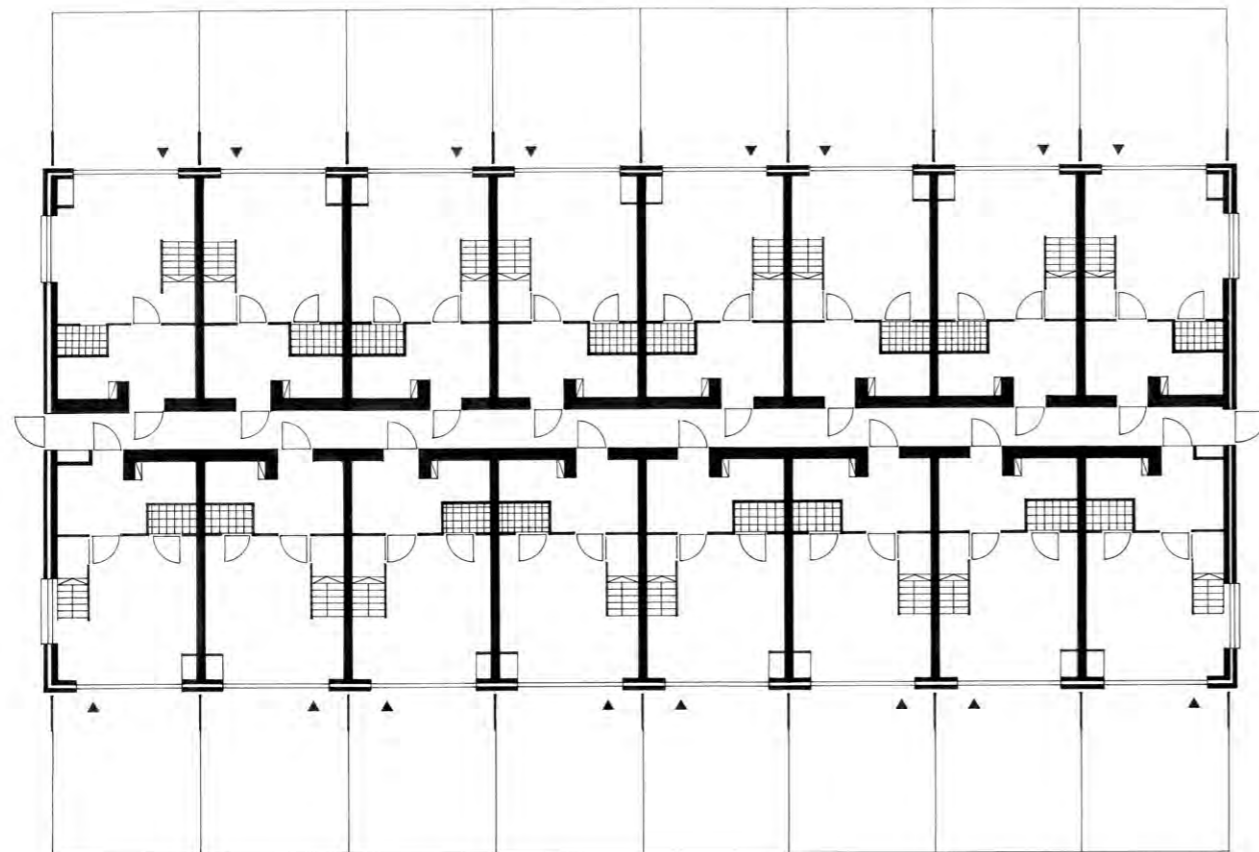
9405 GWL Terrain, Amsterdam

dok
architecten

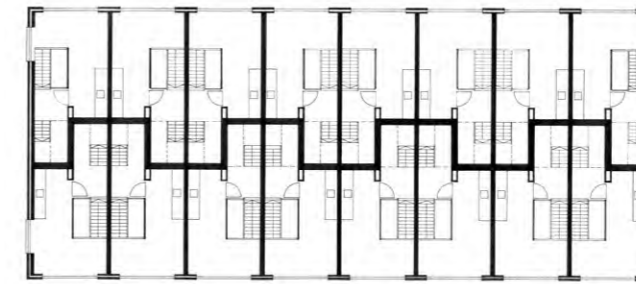


9405 GWL Terrain, Amsterdam

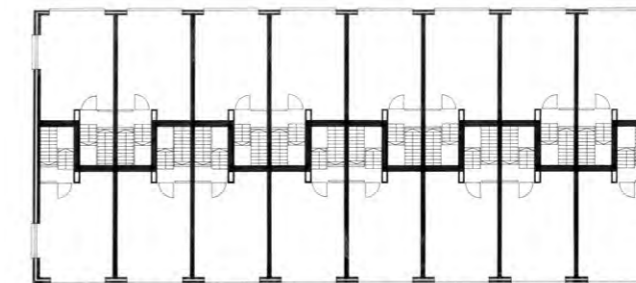
9405 GWL Terrain, Amsterdam



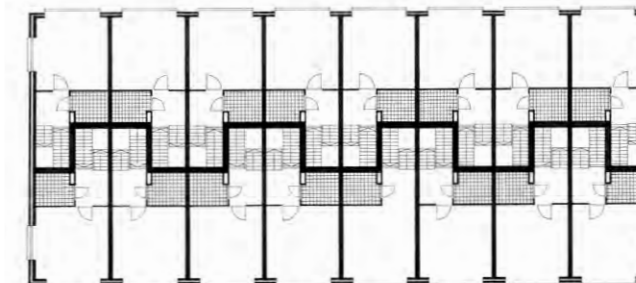
Begane grond zigzag woningen | Ground floor zigzag houses



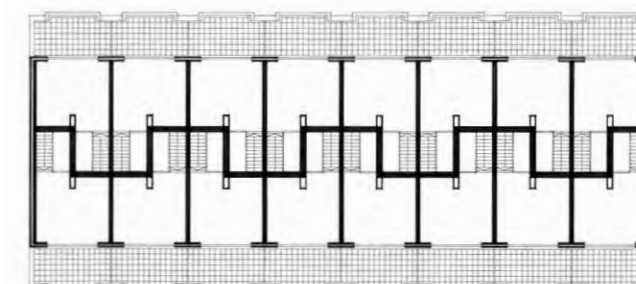
Eerste verdieping | First floor



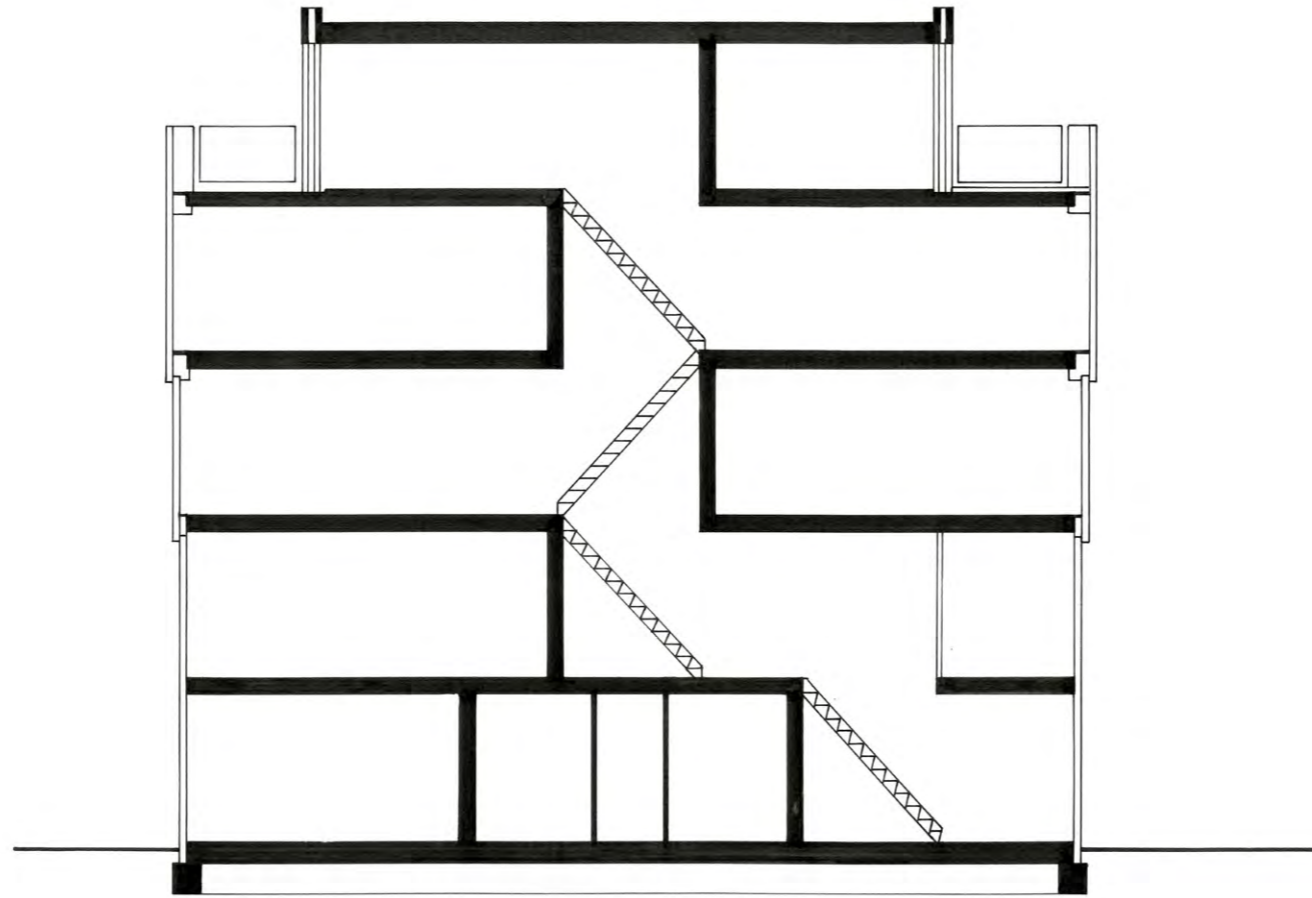
Tweede verdieping | Second floor



Derde verdieping | Third floor



Vierde verdieping | Fourth floor



Doorsnede zigzag woning | Intersection zigzag house

9405 GWL Terrein, Amsterdam

9405 GWL Terrain, Amsterdam



9405 GWL Terrein, Amsterdam

9405 GWL Terrain, Amsterdam

dok
architecten



9405 GWL Terrein, Amsterdam

9405 GWL Terrain, Amsterdam

dok
architecten